

Title Sponsors



**U.S. Department of
Veterans Affairs**

Partner Sponsor



Banner
University Family Care



2024

Statewide Symposium in Support of Service Members, Veterans & Their Families

April 17-18 | Phoenix, Arizona

arizona coalition
for military families





Arizona's Military & Veterans

Session 2

Arizona's Rural and Veteran
Supportive Partners



Facilitators



Cesar Torres, USAF MSgt (Ret)

COMMUNITY ENGAGEMENT MANAGER

Arizona Coalition for Military Families



Emory Flagg, USAF MSgt (Ret)

CAREER NAVIGATION SPECIALIST

Arizona Coalition for Military Families





Arizona's Rural and Veteran Supportive Partners

Justine Ducote

Chair

Cochise Serving Veterans

Arizona's Rural and Veteran Supportive Partners



Overview of Services

- Financial assistance (housing, hotel, utilities, etc.)
- Budget and Financial Planning Classes
- Volunteer projects
- Referrals to other organizations/resources
- Hygiene Products
- Food Insecurities

3 Challenges In Serving Rural Veterans

- Limited Resources
- Communication of available resources
- Volunteers

Strategies to Overcome the Challenges

- Collaboration
- Refrain from asking the community for donations



Arizona's Rural and Veteran Supportive Partners

Justin Price

Outreach Coordinator

US Vets - Prescott

Andy Calin

Outreach Specialist

US Vets - Prescott



Arizona's Rural and Veteran Supportive Partners



Overview of Services

US Vets Prescott offers a wide range of services to rural veterans. In working with our partners, we can leverage our outreach efforts and participation in Stand Downs/different resource fairs to provide essentials like toiletries, clothing, food, gas cards and more.

- Yavapai County Stand Down - September 20th and 21st.
- Window Rock Navajo Resource Fair
- Target the more rural and less service-rich areas within Northern Arizona
- Primary Focus: Housing veterans experiencing homelessness
 - Outreach, referrals and staffing through the VA - transitional housing for veterans
- Necessary transportation to the Prescott campus
- Once in the program, a veteran that only a day prior may not have had access to water, shelter or food now has a secure room to sleep, three hot meals a day, case management and a sense of safety and community.

3 Challenges In Serving Rural Veterans

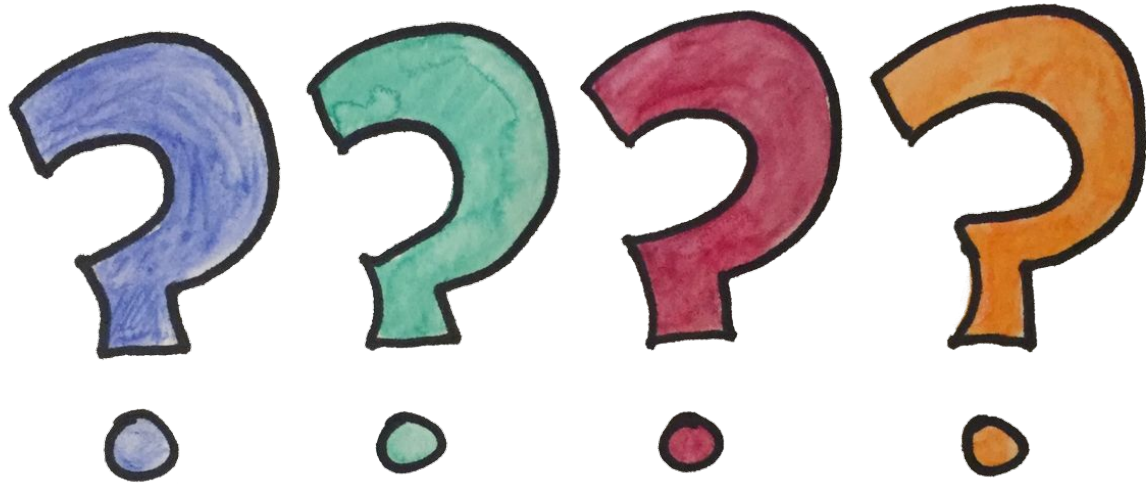
- **Often difficult to reach**
- **Coordinating Transportation**
- **Hesitance to Relocate**

Strategies to Overcome the Challenges

- **Often difficult to reach**
 - Many individuals lack access to phones, making in-person interactions our only viable communication method. We depend significantly on the relationships we have built with our local partners, community leaders and veteran advocates to help facilitate our outreach efforts. This approach effectively reduces the burden on our outreach workers and allows us to effectively cover a larger geographical area.
- **Coordinating Transportation**
 - Transportation to the site can pose a significant challenge in the absence of personal vehicles. We employ a variety of strategies to address this issue, including arranging transportation through our partners, coordinating a mutually convenient pick-up location, or ensuring the individual's safety and well-being until we can facilitate the pick-up ourselves. This approach underscores our commitment to providing comprehensive support to our veterans.
- **Hesitance to Relocate**
 - Even when experiencing literal homelessness, some individuals may favor the familiarity of their local surroundings. In such scenarios, it is crucial to provide a comprehensive explanation of the benefits, structure, and stability that our program can offer. It is equally important to describe our location, particularly if the individual is unfamiliar with it. Establishing a strong rapport and fostering a sense of comfort with us as service providers is a critical component in gaining the individual's trust. This trust is a necessary precursor to their decision to participate in our program.



Questions?





Session Evaluation

We want to hear from you!

